

Colebourn 221



HEWITSON HOMES

OUR QUALITY IS YOUR ASSET



Our Point of Difference

Allow me to introduce myself, Joel Hewitson the Managing Director, and the QBCC Licenced Builder as Hewitson Homes.

I offer a service to you like no other. I invite you to meet with me allowing you to select from my design range, or customise your home design to suit your specific needs, requirements and aesthetic taste. You can customise any of our offered design range, or start fresh by meeting with our design team.

You will sign the building contract with me, and communicate directly with me throughout the entire build.

This ensures your every need is catered for, delivering your perfect home to you and your family.

Thank you for considering Hewitson Homes. I look forward to meeting you soon.

Specification

Designer kitchen with stone benchtop. Soft close function to drawers and doors.

Stainless steel appliances.

Mixer tapware.

Feature entry door.

Air conditioning split systems

Exposed aggregate concrete driveway package

Landscaping and irrigation package

Half share timber fencing

2.4m Wall mounted clothes line

24 m



11.2 m

Design Features

- 4 Bedrooms
- Open Plan Living
- Formal Lounge
- Dining
- Master Ensuite
- Walk In Robe
- Designer Kitchen
- Laundry
- Double Lock Up Garage
- Entry Porch
- Patio
- 221 m2

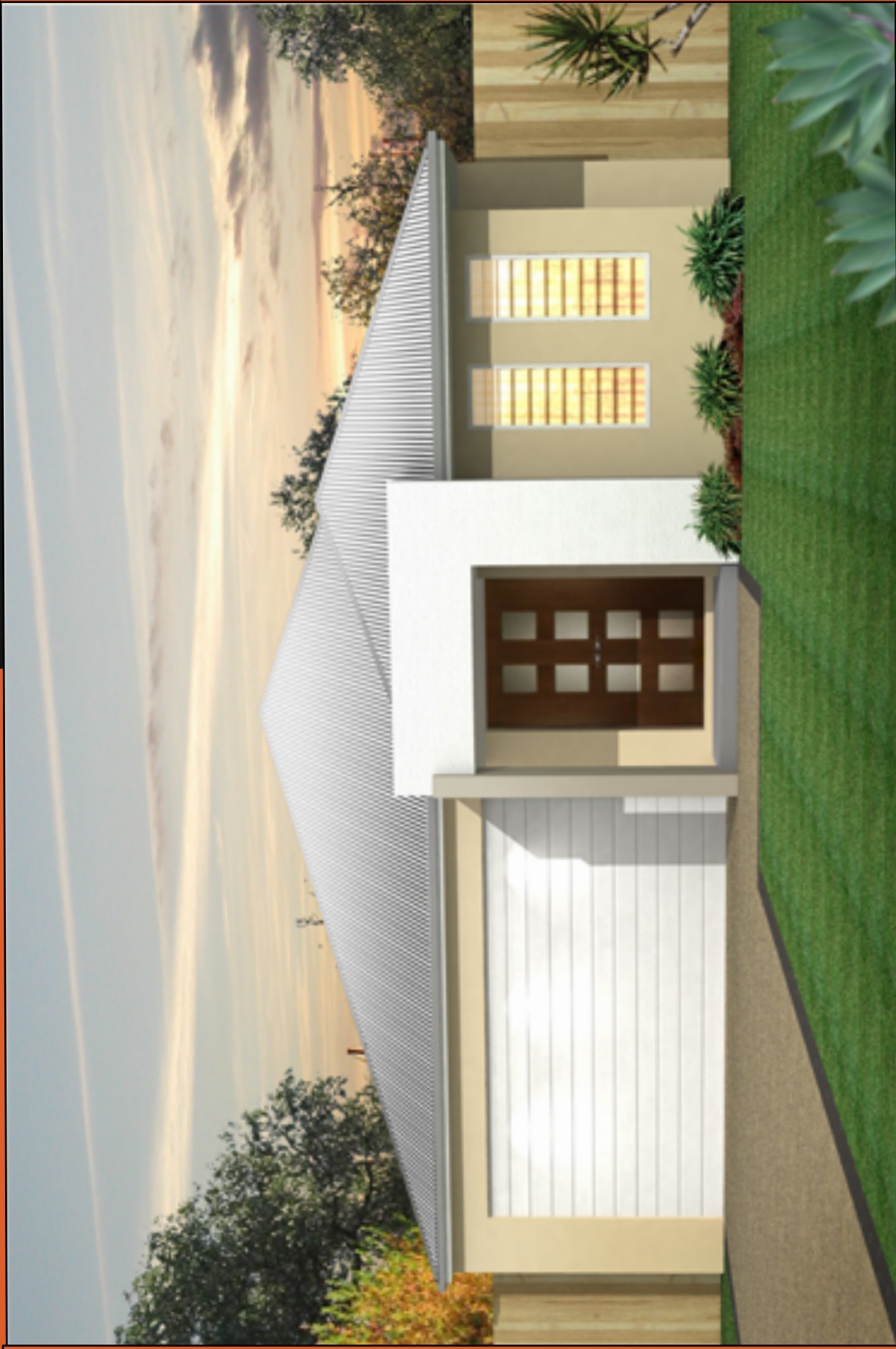
Contact us today!

T: 07 47 894 256 M: 0421 463 937

E: sales@hewitsonhomes.com.au

www.hewitsonhomes.com.au

Facade 2



Facade 3



