

# The Beach 225



**HEWITSON**  
**HOMES**

OUR QUALITY IS YOUR ASSET



## Our Point of Difference

Allow me to introduce myself, Joel Hewitson the Managing Director, and the QBCC Licenced Builder as Hewitson Homes.

I offer a service to you like no other. I invite you to meet with me allowing you to select from my design range, or customise your home design to suit your specific needs, requirements and aesthetic taste. You can customise any of our offered design range, or start fresh by meeting with our design team.

You will sign the building contract with me, and communicate directly with me throughout the entire build.

This ensures your every need is catered for, delivering your perfect home to you and your family.

Thank you for considering Hewitson Homes. I look forward to meeting you soon.

## Specification

Designer kitchen with stone benchtop. Soft close function to drawers and doors.

Stainless steel appliances.

Mixer tapware.

Feature entry door.

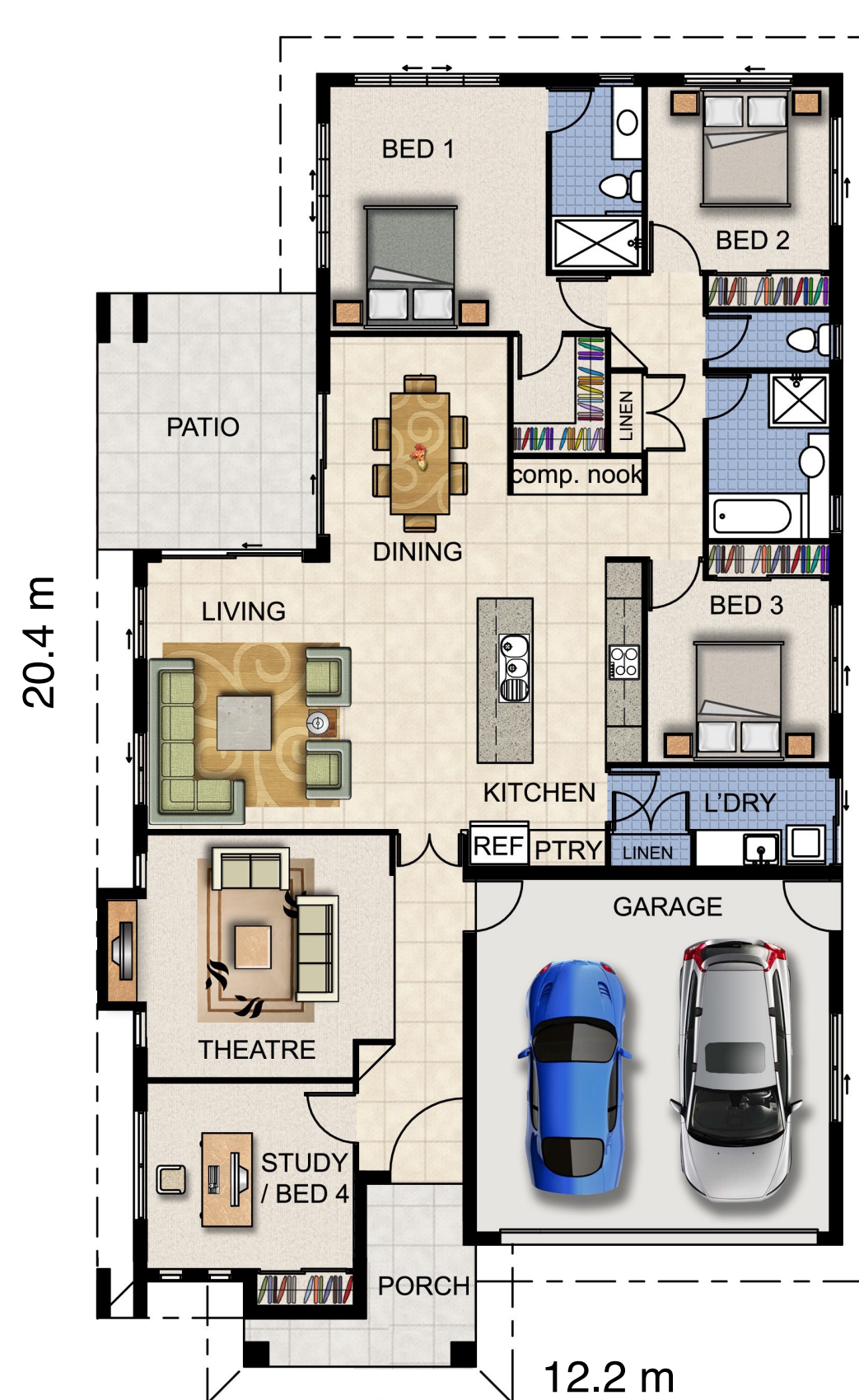
Air conditioning split systems

Exposed aggregate concrete driveway package

Landscaping and irrigation package

Half share timber fencing

2.4m Wall mounted clothes line



## Design Features

4 Bedrooms  
Media Room  
Open Plan Living  
Dining  
Family Area  
Study Nook  
Master Ensuite  
Walk In Robe  
Designer Kitchen  
Laundry  
Double Lock Up Garage  
Entry Porch  
Patio  
225 m2

Contact us today!

T: 07 47 894 256 M: 0421 463 937

E: sales@hewitsonhomes.com.au

www.hewitsonhomes.com.au





Contact us today!

T: 07 47 894 256 M: 0421 463 937

E: [sales@hewitsonhomes.com.au](mailto:sales@hewitsonhomes.com.au)

[www.hewitsonhomes.com.au](http://www.hewitsonhomes.com.au)